



**Office Hours**

Monday thru Thursday  
9:00 a.m.- 9:30 p.m.  
Friday 9 a.m.- 2 p.m.  
Saturday 8:00 a.m.- Noon

**Address:**

1200 E. 104th St., Suite 100  
Kansas City, MO 64131

**Telephone:** 816-444-1000

**Fax:** 816-444-1740

**E-mail:**

[kansascity@webster.edu](mailto:kansascity@webster.edu)

**Web Site:**

[www.webster.edu/kc](http://www.webster.edu/kc)

**Staff:**

**Regional Director:**

Dr. Carolyn Cottrell

**MAT Program:**

Dr. Jim Haas, Director  
Dolores Coulter, Assistant

**BSN Coordinator:**

Maria Kirwan

**MSN Coordinator:**

Dr. Margo Thompson

**Advisors:**

Yvonne Petite  
Wally Lovett  
Carol Pearce  
Bruce Appel, Counseling  
Moya Frederickson, MAT  
Tandy Gabbert, MSN

**Community Relations:**

Pola Firestone

**IT Coordinator:**

Sima Tarokh

**Office Manager:**

Cindy Bratcher

**Department Representative:**

Irina Leslie, Registrar

**Coordinator:**

Tina Wright, Financial Aid

**Department Assistants:**

Tiffany Jackson  
Lauren Mansfield

**Webster University Selects  
Dr. Elizabeth Stroble as New President  
Names Dr. George as Chancellor**

After a comprehensive search, the Webster University Board of Trustees has chosen Dr. Elizabeth Stroble, Senior Vice President, Provost, and Chief Operating Officer at the University of Akron in Ohio, as the University's President and Chief Executive effective July 1. The Board also named Interim President Dr. Neil J. George to the newly created position of Chancellor.

"Dr. Stroble's extensive experience in pursuing academic excellence and commitment to reaching out to our extended campuses around the world make her a great match for Webster University," says Dr. Carolyn Cottrell, Regional Director of the Kansas City campus, and a member of the Presidential Search committee.

Dr. Stroble holds a Ph.D. in Curriculum and Instruction from the University of Vir-



On July 1, Dr. Elizabeth Stroble becomes Webster University's new President. Dr. Neil George becomes Chancellor.

ginia, degrees from Southern Illinois University Edwardsville, and a bachelor's degree from Augustana College in Rock Island, Ill.

Dr. Stroble brings 35 years of diverse experience as an educator and academic leader to her new position at Webster University. Dr. Stroble will become the 14th President of Webster University.

Dr. George, 68, will become the first Chancellor in the University's 94-year history. In that role, he will provide counsel to the President on matters of educational excellence, major capital projects, fundraising, and the general development and welfare of the University.

Dr. George holds a bachelor's degree from King's College, a master's from Georgetown University, and a Ph.D. in Political Science from Case Western Reserve University, and completed postdoctoral studies at Harvard University. He joined the Webster University faculty in 1972, and has served in a number of leadership positions. Dr. George was named Executive Vice President and Vice President for Academic Affairs in 1995.

**Graduation Good-Bye!**

Webster University's 2009 graduation ceremony will take place on Wednesday, May 20, at 7:00 pm in the Rose Theatre at Rockhurst High School, 93rd and State Line Road, Kansas City, Missouri. This ceremony honors our Kansas City Campus graduates from August, October, and December, 2008 and from March and May, 2009.

This year our guest speaker will be Crosby Kemper, III, Executive Director of the Kansas City Missouri Public Library. The program will last approximately 90 minutes and a reception in the Rockhurst commons area will follow.

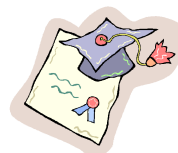
Because of limited seating, graduates are limited to four guests. Tickets may be re-

quested by calling 816-444-1000 before May 1st. No one will be admitted without a ticket.

Graduate candidates can order caps and gowns the week of March 16-29, when representatives from Herff Jones Cap & Gown will be in the lobby from 4:30-6:00 pm. Orders can also be placed online at [www.herffjones.com/college/graduation](http://www.herffjones.com/college/graduation).

Graduation attire will be delivered to the Webster administrative office on May 8.

**If you are planning to graduate in May, you must submit a petition with your advisor.**



**Calendar**

**March 14**—Spring 2 begins—MA/MBA/MS/MAT/MSN/BA/BSN

**May 7**—Spring 2 ends MAT/MSN/BA/BSN

**May 14**—Spring 2 ends MA/MBA/MS/

**May 20**—Commencement

**May 30**—Summer term begins—

MA/MBA/MS/MHA

**May 23-25**—Memorial Day Holiday—Office closed

**June 1**—Summer term begins—MAT

**June 6**—Summer term begins—BA/BSN/MSN

**July 3-4**—Independence Day holiday—Office and school closed

**July 24**—Summer term ends—MAT

**July 31**—Summer term ends—BA/BSN/MSN/MA/MBA/MS/MA

**August 15**—Fall 1 begins—

MA/MBA/MS/MHA

**August 17**—Fall 1 begins—MAT

**August 22**—Fall 1 begins—BA/BSN/MSN

**September 5-7**—Labor Day holiday—Office and school closed

**October 8**—Fall 1 ends—MAT

**October 16**—Fall 1 ends—BA/BSN/MSN/MA/MBA/MS/MHA

## Webster News

**Please Update Personal Info:** If you have moved and have new address or phone information, please update your personal information on Connections or see Irina. Online, after logging into Connections, go to the "Student" tab. Click on the student academic services tab and click on biographical information.

**Register for Summer!** Summer registration began March 2nd. Classes begin May 30th. Be sure to register early!

**11 Months, 5 Countries, 1 MBA:** Webster University offers full-time graduate students an opportunity to live, learn, and study at Webster's campuses in Geneva, Leiden, London, Shanghai and Vienna. In eleven months, students will receive an MBA degree. For more information go to [www.webster.edu/globalmba](http://www.webster.edu/globalmba).

**Delta Mu Honor Society for Business and Management Students:** Academically eligible students will be e-mailed an invitation to join this prestigious organization. If you are a business or management student, please check your Webster e-mail account! Then, notify Webster-KC advisor, Wally Lovett, at 816-926-4277, if you would like to join.

**Webster Offers Free E-learning Course to Entrepreneurs:** Interested in starting a business? Webster students and alumni can sign-up for a free, non-credit, e-learning course entitled, *Planning the Entrepreneurial Venture* sponsored by The Ewing Marion Kauffman Foundation. The self-paced program is designed to help students research, develop, and write a business plan for a new venture. Applications are available in the lobby or contact Pola Firestone, [polafirestone80@webster.edu](mailto:polafirestone80@webster.edu), 816-926-4288.

## Alumni News

The next Webster-KC Alumni Chapter meeting is Wednesday, April 22, 6:30 pm at Webster-KC campus. Please contact Jackie Wagner for more details, [jackie8860@aol.com](mailto:jackie8860@aol.com).

### From the Corner Office Notes from Dr. Carolyn Cottrell, Regional Director

**"THANK YOU!"** These are words all of us like to hear, and we hope students know that we appreciate your choosing Webster as your provider of higher education. As Webster University students, you attend the oldest extended site outside the home campus of St. Louis. Our Kansas City campus is proud of its history and reputation, going back to the sixties, when we first offered classes, and to 1972 when we began offering degrees.

We had a wonderful turnout at the Open House last week. Many students decided on the spot to apply to Webster University. Faculty and staff were there to give them personal attention and to explain our programs. It would take a long time to tell of the 'extras' here at this campus.

Aside from the quality of our instructors and programs, we give students resources

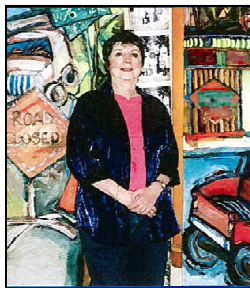
## Alumni News—cont'd

**Alumni Legacy Scholarship for Dependents:** Dependents of Webster University alumni can receive a guaranteed \$6,000 annual scholarship as full-time freshmen attending the St. Louis home campus, beginning in August 2009. Legacies who meet the admission requirements will be eligible to receive the scholarship each year for a total of four years. Alumni dependents also will be able to apply for additional scholarships or financial aid. More information can be found at [www.webster.edu/scholarship](http://www.webster.edu/scholarship).

**Great Savings for Alumni:** Webster University has created the Professional Enrichment Scholarship for Alumni (PESA) in response to the current economic situation. This summer, Fall 1 and Fall 2, Alumni who are not current students can take up to two courses per term at rate of \$285 per credit hour. Alumni must be in good standing. Not available for MAT or online courses. Grant forms need to be completed.

*Most sequential Master Degree programs are 24-30 hours. You can complete up to 18 hours with the PESA for Alumni this year!*

For more information and to apply online go to [www.webster.edu/pesa/](http://www.webster.edu/pesa/) or contact Pola Firestone, Community Relations Coordinator, [polafirestone80@webster.edu](mailto:polafirestone80@webster.edu), 816-926-4288.



Webster-KC staff member, Tina Wright, recently exhibited her artwork at the New School for Social Research, in New York City on March 6.

## Webster Shots



Nearly 100 teachers, parents and administrators from area public school districts attended *Bridging Families, Communities, and Schools*, a workshop sponsored by Missouri Literacy Investment for Tomorrow (LIFT) and Missouri Parent Information Regional Center (PIRC) held at Webster University on February 12th.



Braving the winter weather to attend the New Student Orientation on January 24th are: (l-r) Jon Henderson, BA-MNGT, Debbie Sisk, MA-MNGT, Trish Viscek, BSN, Karen Sims, BA-MNGT, and Markita Phillips, MBA/MA MNGT.



New MHA students from Centerpoint Medical Center (l-r) Gene Henderson, Millie Langan, Suzanne Ford, Kristen Blochlinger were the first to use the Spring Application Fee waiver coupons!



Attendees enjoyed Dr. Carolyn Cottrell's presentation *Stress Management and the Brain*, sponsored by the Chamber of Commerce of Greater Kansas City and Webster University on January 21st.

so that you have a successful experience here:

Academic Advisors, who help you make a program plan and to keep it up to date.

Our Writing Center, where you can get help with research and writing papers.

New Student Orientation, where you learn about Connections (your Webster email and university touchpoint) and Passports (Webster's online Library resource).

Our financial aid advisor, who can help you deal with paying for your education through loans, scholarships, and grants.

The Ambassador Program. You can earn a very nice gift if you refer another person who matriculates and attends at least one term.

Annual Career Fair (we've had two so far,

and plan another in September).

Alumni Association, a great opportunity for networking, fun, and real benefits, and sponsors of "Food for Thought"—free snacks and drinks for students once a semester.

Free online seminar on entrepreneurship, sponsored by the Kauffmann Foundation.

Remember: Whether you use your campus resources or not, your tuition is the same—so why not make use of these extras? Please take advantage of the opportunities here. Then *you'll* be the ones saying, "Thank you!"

**Have a great Spring 2 term.**

