

Webster UNIVERSITY Ocala Metro Globe

Spring 2012 – Webster University, Ocala/Gainesville Area Metropolitan Campus

Webster Ocala Gives Back to the Community

This Fall, Webster University students, faculty, and staff gave back to the community through various activities and service projects. Starting out the “Season of Giving” was our annual Webster Works Worldwide project in October. This year, the campus was covered in construction paper, glitter, and glue to make encouragement cards to be distributed to children in Central Florida hospitals by the Leukemia and Lymphoma Society.



Webster Works Worldwide is a worldwide community service day in the month of October in which upwards of 75 Webster campuses around the world partner with local organizations to participate in a day of giving back to the communities they serve.

Additionally, the staff at the Ocala Campus participated in “Hog Wild,” supporting United Way of Marion County. Each staff member painted one pig which was then donated back to United Way of Marion County to place throughout the community to help raise money to support financial stability in Marion County. According to UWMC, “Piggy banks will be donated to children at local area shelters for the holidays.”



Pigs from L to R:
“Gorlok”
Amanda Cebula,
Community Relations Coordinator
“Piggy Gaga”
Tracy Rogers,
Director
“Mardi”
Mark Meadows,
Office Manager/Financial Aid
Advisor
“Super Pig”
Dorci Palmer
Department Associate/IT Assistant

What’s Inside?

- Interested in student discounts around town, find a listing of some on page 3.
- Check out pictures from the 2011 graduation ceremony on page 4.

Dates to Remember:

*December 24, 2011 – January 2, 2012

Winter Break

Ocala Administrative Office Closed

*January 7

Start of Spring 1 Term

*January 16

Martin Luther King Jr. Day

Ocala Administrative Office Closed

(Classes may still be held)

*March 17

Start of Spring 2 Term



Faculty/Staff Corner

*Congratulations to **Dr. Karen Fattorosi** and **Christine Massinger!** Both were recognized at this year's graduation with the **Outstanding Faculty Member Award** for the Ocala Metropolitan Campus. This recognition was voted on by the students and presented during the October ceremony.

*Congratulations to the following faculty for 10 years of service to the University:

Dan Andrews
Bill Noffsinger
Dr. Patricia Sokol

Tell Us About Yourself!

Do you have information you would like to include in our next newsletter? Maybe a promotion, a recent wedding, birth of a baby, or achievement you would like to share with your Webster University family? If so, please email Amanda Cebula, Community Relations Coordinator, at amandacebula01@webster.edu.

Academic Advisors

Mike Fallon, Business Academic Advisor

michaelfallon11@webster.edu

Dr. Karen Fattorosi, Counseling Practicum Coordinator

karenfattorosi51@webster.edu

Dr. Nicki Nance, Counseling Advisor/Faculty Coordinator

nnance@webster.edu

Letter from the Director

Holiday Greetings!

The Ocala Metropolitan Campus has experienced a very busy 2011 by remaining active and involved in our community, and we have enjoyed every minute of it! I would like to personally thank those who contributed to our many events over the past year. It was especially heart-warming to see students and alumni at our graduation ceremony and alumni graduation social event. Now, let's keep the momentum going! We are currently collecting food for First Step Food Bank until December 16, 2011. In addition, we are also requesting ornaments to help decorate our holiday tree in the campus lobby. We hope you will join with us to help those in need throughout our community during this holiday season. To "kick" off 2012, the Ocala campus will be sponsoring the Annual ACEL (Alachua County Emerging Leaders) Champions for Charity Kickball Tournament in February. While 2011 has been jam packed with exciting changes and activities, we are sure the New Year will continue to bring many joyful occasions to the Ocala campus!

Many wishes to you for a safe and happy holiday season!

A handwritten signature in cursive script, appearing to read "Tracy Rogers".

Tracy Rogers, MBA

Director, Ocala/Gainesville Area Metropolitan Campus

Show me the discounts!

As a graduate student, you once again qualify for student discounts at participating businesses. Typically, you just have to show them your Student ID card. Check out a listing below of some locations we heard provide discounts to Webster University students.*

- Tijuana Flats
- Movie Theatres
- Azulene Spa
- Ringling Museum of Art in Sarasota
- Appleton Museum
- Hippodrome Theatre
- Not sure if a business does? Don't forget to ask!

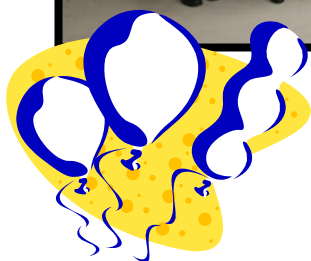
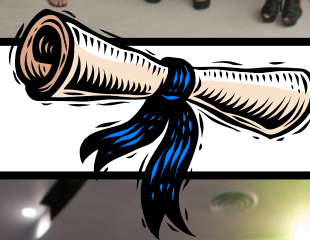


Know of other discounts? Let Amanda Cebula, Community Relations Coordinator know at amandacebula01@webster.edu.

*Webster University does not endorse the above businesses or services but provides this page as a service to our students.

Congratulations 2011 Graduates!

On October 8th, the Ocala Metropolitan Campus students, faculty, and staff celebrated their twelfth annual commencement ceremony. It was held at the Fine Arts Auditorium at the College of Central Florida. AVP, Dr. Beth Russell delivered the commencement address. Enjoy the accompanying photos from the ceremony and Alumni Welcome Social!



Pictures provided by Cindi with an Eye Photography.

Welcome to the Alumni Association!



The Campus will be Closed for Winter Break and Martin Luther King, Jr. Day



The Ocala Administrative office will be closed for Winter Break from December 24, 2011, through January 2, 2012. The office will also be closed in observance of Martin Luther King Jr. Day on Monday, January 16, 2012. **It is the student's responsibility to check with his or her instructor and the course syllabus about class cancellations and coursework as changes may be made during these times.**

Check us out on Facebook and Twitter!

facebook

Webster University
Ocala/Gainesville Area
Metropolitan Campus
Fan Page

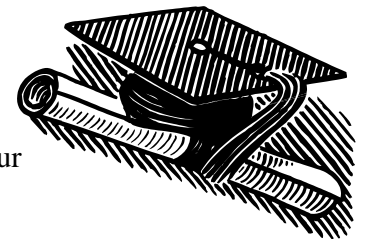


twitter

Webster Ocala

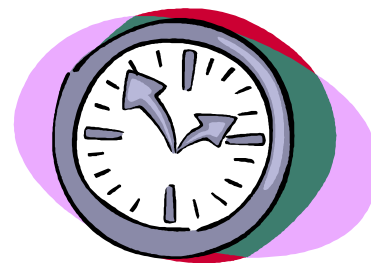
Are you ready to Graduate?

Fill out a Petition to Graduate!!! These **must** be submitted one term before your final class in order to be processed in a timely manner reflecting the actual completion of your degree. Petitions to Graduate can be obtained through the Administrative Office.



Drop/Add Policy

The student enrolled in courses is financially responsible for the courses he/she is enrolled in. If the student decides not to attend, the student should immediately request the courses be dropped. The university reserves the right to drop the student from courses for any one of several reasons. However the student should not assume that non-attendance will lead to an automatic drop. The student remains financially responsible for courses not dropped.



OFFICE HOURS

Monday through Thursday 10:00am – 6:00pm
Friday: By Appointment Only

Please call ahead to make sure the office is open.

REGISTRATION FOR SPRING COURSES

DON'T FORGET to enroll for your Spring Courses!!!

Remember, you must enroll in both Spring 1 and Spring 2 terms if you are using Financial Aid.

Have you ever tried enrolling online? It is now easier than ever to enroll in classes all with the click of a button. All you need to do is login to your connections account. Start, by clicking on "Student Academic Services." For security purposes you login for a second time and then go to "Registration." From there, follow the steps. Insert the information for the course(s) you want to take, and before you know it, you will be enrolled for the next term. Through your connections account, you are also able to view grades, review financial aid awards, access the library, and even estimate your GPA!

If you have any questions regarding your course schedule, please contact your academic advisor.

Course schedules can be found in the Administrative Office or online at www.webster.edu/ocala

Campus Reminders



- Remember, if a class is not meeting for any reason it may be rescheduled for a different time. Please consult your instructor for these changes.
- Please make sure to check your Major/Degree in your Connections Account to be sure you are registered in the correct program! Sometimes the program you originally applied for admission to is different than the program you now find yourself in. To make changes consult your Academic Advisor!
- Recycling bins are available on the campus for your use. We currently recycle Aluminum, Plastic, Paper, and Newspapers.
- Please remember to be respectful toward your peers and instructors by being at class on time and refraining from talking and using cell phones to talk or text during class.
- Food is not allowed to be delivered to the classrooms. If your instructor allows you to bring food to class, please be sure to clean up after yourself.

POLICY STATEMENT REGARDING CAMPUS VISITORS/CHILDREN ON CAMPUS

Only authorized personnel and students are permitted on campus and in classrooms. Visitors provide an unnecessary distraction to others in the classroom. In addition, to maintain the appropriate environment conducive to learning and to protect minors from injury, no persons under the age of 18 years will be allowed in instructional areas. Furthermore, no unsupervised children should be brought to the campus at any time, except for college-approved events. Webster University does not have childcare accommodations on campus. Arrangements for childcare should be made with an off-campus facility.

Alumni Fall Festivities



The night before graduation, the Ocala Alumni Chapter hosted a social event to kick off this year's alumni activities. The graduates were celebrated in royal fashion and had a contest to vote for Mr. and Miss Webster Ocala. Our very own "Miss Webster," **Dr. Beth Russell**, Associate Vice President, was there to crown the new royalty and serve as the official judge. The selection of Royalty included **Mersha Edwards** as "Miss Webster" and **Allen**

Kushner as "Mr. Webster." **Helen Willis** was "Most likely to become a CEO." "Most likely to become a LMHC" was **Izmane Jean-Louis**. "Miss Congeniality" honors were shared by **Melanie Pigott** and **Monoco Benjamin**. Chapter Officers **Johnny Downing** and **Mike Fallon** were the official emcees of the evening.



L to R: Dr. Beth Russell, Allen Kushner, Mersha Edwards

The next event was the Graduation Ceremony where alumni helped make sure the day's events went off without a problem. Thank you to the following alumni who served as marshals: **Johnny Downing**, **Lori Manone**, and **Melanie Pigott**.

Rounding out the activities for this Fall was a Friday Fiesta at Tijuana Flats where alumni members were able to socialize and catch up all while eating some great food. Pay attention to your email or the alumni website www.webster.edu/alumni for activities in 2012!



Questions about the Ocala Alumni Chapter can be directed to Ocala Chapter President, Johnny Downing
jldowningsr@yahoo.com.



Ocala Metropolitan Campus
4414 SW College Road, Suite 942
Ocala, FL 34474

Phone: 352-861-9330
Toll Free: 877-986-2252
Fax: 352-861-9333



Publisher: Tracy Rogers, MBA

Editor: Amanda Cebula, MA